

**Comcast Business.**

**Comcast Business** proposes, specifically, to provide the following services requested in RFP-98000-000000-4666 GDA Direct - Network Services – Dedicated Internet Access (Ethernet Dedicated Internet), Ethernet Private Line inclusive of Point-to-Point, Point-to-Multipoint and Multipoint to Multipoint, Ethernet over HFC (EoHFC) inclusive of Point-to-Multipoint and Multipoint to Multipoint, Cable Modem Internet, Cable TV. Voice services include – Unlimited Business Class Voice, PRI, SIP Trunks, Business VoiceEdge. Additional service offerings included are – SD-WAN, Managed Internet Router Service and DDoS Mitigation Service and Television

**General Pricing Notes:**

\* All pricing is reflected as in Comcast's Footprint, Type 2 costs will be on ICB Basis

\* Pricing shown does not include federal, state or local regulatory fees, taxes or surcharges.

\* Additional State Taxes and Surcharges may be applicable, dependent upon your tax exempt status including the Universal Service Fund Surcharge (State), 911 Line Tax (City),

Comcast Surcharges Universal Connectivity Charge, Regulatory Recovery Fees, 911 Cost Recovery Fee, P.U.C. Surcharge (State), Telecommunications Relay Service Line Surcharge. Could add up to 30%.

\* Pricing below may be adjusted at Comcast's sole discretion based on but not limited to service volume, revenue commitments, term length and other commercial considerations.

\* Pricing does not include costs for construction if needed.

\* Availability validation is required

**Data Circuits for WAN Tab**

Data Circuits for Wide Area Networking (Corporate Dedicated Circuits)

Comcast Business Ethernet - Multipoint to Multipoint - Comcast Business Ethernet Network Services (ENS)

Comcast Business Ethernet - Point to Point - Comcast Business Ethernet Private Line (EPL)

Comcast Business Ethernet - Point to Multipoint - Comcast Business Ethernet Virtual Private Line (EVPL)

Class of Service (COS) and Delivered over HFC (EoHFC) or Fiber

Managed Router Pricing and Hardware

SD WAN

DDoS Mitigation Services

**Dedicated Internet Circuits Tab**

Ethernet Dedicated Internet Services (EDI)

Ethernet Dedicated Internet Services (EDI) with Managed Router

Routers

**Broadband Tab**

Comcast Business Class Internet over HFC Ethernet Dedicated Internet

Static IP's

Comcast Business WiFi Pro

Comcast Business Connection Pro

Comcast Business Security Edge

**Managed Wi-Fi**

Comcast Business Managed WiFi

**PSTN Voice Services and VoIP Tab**

Comcast Business Voice

Business Voice Edge

Equipment Selections

Comcast Business PRI Trunking

Comcast Business SIP Trunking

**Unified Communications**

Business Voice Edge

PRI

**Inside Cable and Wiring**

Do Not Participate

**Additional Products**

Comcast Business TV

Data Circuits for Wide Area Networking (Corporate Dedicated Circuits)

General Pricing Notes

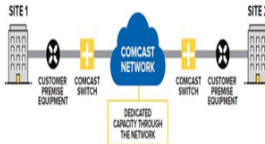
- \* All pricing is reflected as in Comcast's Footprint, Type 2 costs will be on ICB Basis
- \* Pricing shown does not include federal, state or local regulatory fees, taxes or surcharges.
- \* Additional State Taxes and Surcharges may be applicable, dependent upon your tax exempt status including the Universal Service Fund Surcharge (State), 911 Line Tax (City), Comcast Surcharges Universal Connectivity Charge, Regulatory Recovery Fees, 911 Cost Recovery Fee, P.U.C. Surcharge (State), Telecommunications Relay Service Line Surcharge. Could add up to 30%.
- \* Pricing below may be adjusted at Comcast's sole discretion based on but not limited to service volume, revenue commitments, term length and other commercial considerations.
- \* Pricing does not include costs for construction if needed.
- \* Availability validation is required
- \* Additional Bandwidths available - call Comcast Business for your specific requirement
- \* Please note that prices listed in this catalog are pre-mandated taxes.
- \* Please note that prices listed in this book

Ethernet Private Line (EPL) - Metro and Regional EVC - Basic (POINT TO POINT)

Comcast Ethernet Private Line (ENS) Service is a reliable, flexible, high bandwidth alternative to traditional TDM Private Lines, enabling customers to connect their Customer Premises Equipment (CPE) using a low-cost Ethernet interface. Your organization can meet the demand of bandwidth-intensive applications without disrupting your internal customers' needs with flexible, scalable point-to-point configurations delivering high-capacity fiber connections between two sites. Comcast Ethernet Network Service (ENS) enables customers to connect physically distributed locations across a Metropolitan Area Network (MAN) as if they are on the same Local Area Network (LAN). The service provides VLAN transparency enabling customers to implement their own VLANs without any coordination with Comcast. ENS is a reliable, more flexible, scalable, and cost-effective alternative to traditional hub and spoke network topologies using Frame Relay, TDM private lines or IP VPNs. ENS offers three Classes of Service (CoS): Basic, Priority, and Premium. CoS options enable customers to select the CoS that best meets their applications' performance requirements. The service is offered with 10Mbps, 100Mbps, 1Gbps or 10Gbps Ethernet User-to-Network Interfaces (UNI) and is available in increments from 1Mbps to 10Gbps. Comcast's Ethernet Network Service is Certified MEF Compliant (POINT TO POINT) \*Service availability verification is required and special construction charges may apply.

Ethernet Private Line Service (Point to Point)

Enables use of any VLAN or Ethernet control protocol across the service.



Pricing Includes	Fiber	EoHFC*
Two UNI Ports*	10/100Mb, 1Gb, or 10Gb Ports	10/100Mb Port only
EVC Bandwidth	1Mbps to 10Gbps	2.4, or 6Mbps

\* One UNI at each location. Pricing fluctuates if ports are different speeds at each location.

\* Special Construction Costs may apply for new fiber builds

Ethernet Private Line Selections:

Ethernet Private Line over Coax (EPL EoHFC) Metro EVC Point to Point, Basic Only

	Install	MRC
EPL EoHFC - Ethernet Private Line, Point to Point, Basic	2 Mbps \$ 500.00	\$ 156.83
EPL EoHFC - Ethernet Private Line, Point to Point, Basic	4 Mbps \$ 500.00	\$ 156.83
EPL EoHFC - Ethernet Private Line, Point to Point, Basic	6 Mbps \$ 500.00	\$ 156.83
EPL EoHFC - Ethernet Private Line, Point to Point, Basic	8 Mbps \$ 500.00	\$ 279.83
EPL EoHFC - Ethernet Private Line, Point to Point, Basic	10 Mbps \$ 500.00	\$ 279.83
EPL EoHFC - Ethernet Private Line, Point to Point, Basic	20 Mbps \$ 500.00	\$ 279.83

Ethernet Private Line, Point to Point, Basic (EPL)

	Install	MRC
EPL - Ethernet Private Line, Point to Point, Basic	10Mbps \$ 500.00	\$ 279.83
EPL - Ethernet Private Line, Point to Point, Basic	50Mbps \$ 500.00	\$ 375.15
EPL - Ethernet Private Line, Point to Point, Basic	100Mbps \$ 500.00	\$ 446.90
EPL - Ethernet Private Line, Point to Point, Basic	200Mbps \$ 500.00	\$ 545.30
EPL - Ethernet Private Line, Point to Point, Basic	500Mbps \$ 500.00	\$ 625.25
EPL - Ethernet Private Line, Point to Point, Basic	1Gbps \$ 500.00	\$ 799.50
EPL - Ethernet Private Line, Point to Point, Basic	2Gbps \$ 500.00	\$ 1,107.00
EPL - Ethernet Private Line, Point to Point, Basic	3Gbps \$ 500.00	\$ 1,424.75
EPL - Ethernet Private Line, Point to Point, Basic	4Gbps \$ 500.00	\$ 1,476.00
EPL - Ethernet Private Line, Point to Point, Basic	5Gbps \$ 500.00	\$ 1,793.75
EPL - Ethernet Private Line, Point to Point, Basic	10Gbps \$ 500.00	\$ 2,757.25

Ethernet Private Line, Point to Point, Priority EPL

	Install	MRC
EPL - Ethernet Private Line, Point to Point, Priority	10 Mbps \$ 500.00	\$ 335.79
EPL - Ethernet Private Line, Point to Point, Priority	50 Mbps \$ 500.00	\$ 450.18
EPL - Ethernet Private Line, Point to Point, Priority	100 Mbps \$ 500.00	\$ 536.28
EPL - Ethernet Private Line, Point to Point, Priority	200 Mbps \$ 500.00	\$ 654.36
EPL - Ethernet Private Line, Point to Point, Priority	500 Mbps \$ 500.00	\$ 750.30
EPL - Ethernet Private Line, Point to Point, Priority	1Gbps \$ 500.00	\$ 959.40
EPL - Ethernet Private Line, Point to Point, Priority	2Gbps \$ 500.00	\$ 1,328.40
EPL - Ethernet Private Line, Point to Point, Priority	3Gbps \$ 500.00	\$ 1,709.70
EPL - Ethernet Private Line, Point to Point, Priority	4Gbps \$ 500.00	\$ 1,771.20
EPL - Ethernet Private Line, Point to Point, Priority	5Gbps \$ 500.00	\$ 2,152.50
EPL - Ethernet Private Line, Point to Point, Priority	10Gbps \$ 500.00	\$ 3,308.70

Ethernet Private Line, Point to Point, Premium EPL

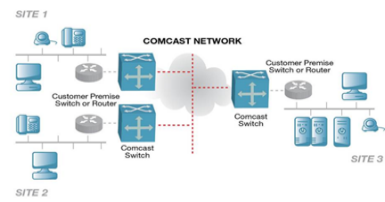
	Install	MRC
EPL - Ethernet Private Line, Point to Point, Premium	10 Mbps \$ 500.00	\$ 369.37
EPL - Ethernet Private Line, Point to Point, Premium	50 Mbps \$ 500.00	\$ 495.20
EPL - Ethernet Private Line, Point to Point, Premium	100 Mbps \$ 500.00	\$ 589.91
EPL - Ethernet Private Line, Point to Point, Premium	200 Mbps \$ 500.00	\$ 719.80
EPL - Ethernet Private Line, Point to Point, Premium	500 Mbps \$ 500.00	\$ 825.33
EPL - Ethernet Private Line, Point to Point, Premium	1Gbps \$ 500.00	\$ 1,055.34
EPL - Ethernet Private Line, Point to Point, Premium	2Gbps \$ 500.00	\$ 1,461.24
EPL - Ethernet Private Line, Point to Point, Premium	3Gbps \$ 500.00	\$ 1,880.67
EPL - Ethernet Private Line, Point to Point, Premium	4Gbps \$ 500.00	\$ 1,948.32
EPL - Ethernet Private Line, Point to Point, Premium	5Gbps \$ 500.00	\$ 2,367.75

EPL - Ethernet Private Line, Point to Point, Premium

10Gbps	\$ 500.00	\$ 3,639.57
--------	-----------	-------------

**Ethernet Network Services (ENS) - Metro and Regional EVC - Basic (MULTIPOINT TO MULTIPOINT)**

Comcast Ethernet Network Service (MULTIPOINT TO MULTIPOINT)  
Comcast Ethernet Network Service is a reliable, cost effective alternative to traditional hub and spoke network topologies using Frame Relay, TDM private lines or ATM, offering a flexible and scalable network solution. Perfect for organizations with many locations and high data traffic, Comcast Ethernet Network Service enables customers to connect physically distributed locations across a Metropolitan Area Network (MAN) as if they are on the same Local Area Network (LAN).  
COMCAST ETHERNET NETWORK SERVICE (ENS) - (MULTIPOINT TO MULTIPOINT)  
Price includes port and bandwidth.



Price Includes*	Fiber	EoHFC†
UNI Port	10/100Mb, 1Gb, or 10Gb Ports	Not Available
EVC Bandwidth	1Mbps to 10Gbps	Not Available

\* One UNI and EVC for each ENS location.  
†Not available for Inter-CRAN opportunities.

\* Special Construction Costs may apply for new fiber builds

**ENS Section**

**Ethernet Network Services over Coax (ENS EoHFC) Metro EVC Point to Point, Basic Only**

ENS EoHFC Ethernet Network Services, Multipoint to Multipoint, Basic  
ENS EoHFC Ethernet Network Services, Multipoint to Multipoint, Basic  
ENS EoHFC Ethernet Network Services, Multipoint to Multipoint, Basic  
ENS EoHFC Ethernet Network Services, Multipoint to Multipoint, Basic  
ENS EoHFC Ethernet Network Services, Multipoint to Multipoint, Basic  
ENS EoHFC Ethernet Network Services, Multipoint to Multipoint, Basic

	Install	MRC
2 Mbps	\$ 500.00	\$ 148.63
4 Mbps	\$ 500.00	\$ 148.63
6 Mbps	\$ 500.00	\$ 148.63
8 Mbps	\$ 500.00	\$ 148.63
10 Mbps	\$ 500.00	\$ 148.63
20 Mbps	\$ 500.00	\$ 179.38

**Ethernet Network Services (ENS), Multipoint to Multipoint, Basic**

ENS - Ethernet Network Services, Multipoint to Multipoint, Basic  
ENS - Ethernet Network Services, Multipoint to Multipoint, Basic  
ENS - Ethernet Network Services, Multipoint to Multipoint, Basic  
ENS - Ethernet Network Services, Multipoint to Multipoint, Basic  
ENS - Ethernet Network Services, Multipoint to Multipoint, Basic  
ENS - Ethernet Network Services, Multipoint to Multipoint, Basic  
ENS - Ethernet Network Services, Multipoint to Multipoint, Basic  
ENS - Ethernet Network Services, Multipoint to Multipoint, Basic  
ENS - Ethernet Network Services, Multipoint to Multipoint, Basic  
ENS - Ethernet Network Services, Multipoint to Multipoint, Basic  
ENS - Ethernet Network Services, Multipoint to Multipoint, Basic

	Install	MRC
10Mbps	\$ 500.00	\$ 148.98
50Mbps	\$ 500.00	\$ 265.83
100Mbps	\$ 500.00	\$ 360.29
200Mbps	\$ 500.00	\$ 366.13
500Mbps	\$ 500.00	\$ 424.56
1Gbps	\$ 500.00	\$ 759.53
2Gbps	\$ 500.00	\$ 1,051.65
3Gbps	\$ 500.00	\$ 1,353.51
4Gbps	\$ 500.00	\$ 1,402.20
5Gbps	\$ 500.00	\$ 1,524.69
10Gbps	\$ 500.00	\$ 2619.39

**Ethernet Network Services (ENS), Multipoint to Multipoint, Priority**

ENS - Ethernet Network Services, Multipoint to Multipoint, Priority  
ENS - Ethernet Network Services, Multipoint to Multipoint, Priority  
ENS - Ethernet Network Services, Multipoint to Multipoint, Priority  
ENS - Ethernet Network Services, Multipoint to Multipoint, Priority  
ENS - Ethernet Network Services, Multipoint to Multipoint, Priority  
ENS - Ethernet Network Services, Multipoint to Multipoint, Priority  
ENS - Ethernet Network Services, Multipoint to Multipoint, Priority  
ENS - Ethernet Network Services, Multipoint to Multipoint, Priority  
ENS - Ethernet Network Services, Multipoint to Multipoint, Priority  
ENS - Ethernet Network Services, Multipoint to Multipoint, Priority  
ENS - Ethernet Network Services, Multipoint to Multipoint, Priority

	Install	MRC
10Mbps	\$ 500.00	\$ 178.78
50Mbps	\$ 500.00	\$ 319.00
100Mbps	\$ 500.00	\$ 432.35
200Mbps	\$ 500.00	\$ 439.36
500Mbps	\$ 500.00	\$ 509.47
1Gbps	\$ 500.00	\$ 911.43
2Gbps	\$ 500.00	\$ 1,261.98
3Gbps	\$ 500.00	\$ 1,624.22
4Gbps	\$ 500.00	\$ 1,682.64
5Gbps	\$ 500.00	\$ 1,829.63
10Gbps	\$ 500.00	\$ 3,143.27

**Ethernet Network Services (ENS), Multipoint to Multipoint, Premium CoS**

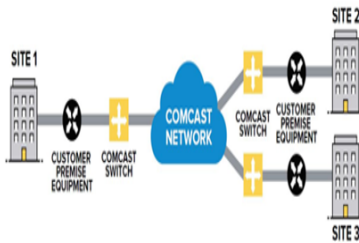
ENS - Ethernet Network Services, Multipoint to Multipoint, Premium  
ENS - Ethernet Network Services, Multipoint to Multipoint, Premium  
ENS - Ethernet Network Services, Multipoint to Multipoint, Premium  
ENS - Ethernet Network Services, Multipoint to Multipoint, Premium  
ENS - Ethernet Network Services, Multipoint to Multipoint, Premium  
ENS - Ethernet Network Services, Multipoint to Multipoint, Premium  
ENS - Ethernet Network Services, Multipoint to Multipoint, Premium  
ENS - Ethernet Network Services, Multipoint to Multipoint, Premium  
ENS - Ethernet Network Services, Multipoint to Multipoint, Premium  
ENS - Ethernet Network Services, Multipoint to Multipoint, Premium  
ENS - Ethernet Network Services, Multipoint to Multipoint, Premium

	Install	MRC
10Mbps	\$ 500.00	\$ 196.66
50Mbps	\$ 500.00	\$ 350.90
100Mbps	\$ 500.00	\$ 475.58
200Mbps	\$ 500.00	\$ 483.29
500Mbps	\$ 500.00	\$ 560.41
1Gbps	\$ 500.00	\$ 1,002.57
2Gbps	\$ 500.00	\$ 1,388.18
3Gbps	\$ 500.00	\$ 1,786.64
4Gbps	\$ 500.00	\$ 1,850.90
5Gbps	\$ 500.00	\$ 2,012.59
10Gbps	\$ 500.00	\$ 3,457.59

**Ethernet Virtual Private Line (EVPL) - Metro and Regional EVC - Basic (POINT TO MULTIPOINT)**

**ETHERNET VIRTUAL PRIVATE LINE SERVICE (POINT TO MULTIPOINT)**

Provides connection between one main location and multiple virtual locations. Comcast Ethernet Virtual Private Line (EVPL) Service provides an Ethernet Virtual Connection (EVC) between two customer locations similar to Ethernet Private Line service but supports the added flexibility to multiplex multiple services (EVCs) on a single UNI at a customer's hub or aggregation site. The service is a reliable, more flexible, higher bandwidth and cost effective alternative to traditional TDM Private Lines, Frame Relay or ATM Layer 2 VPNs and IP VPNs. EVPL offers three Classes of Service (CoS) including: Basic, Priority, and Premium. CoS options enable customers to select the CoS that best meets their applications' performance requirements. The service is offered with 10Mbps, 100Mbps, 1Gbps or 10Gbps Ethernet User-to-Network Interfaces (UNI) and is available in speed increments from 1Mbps to 10Gbps. Comcast's Ethernet Network Service is Certified MEF Compliant. Service availability verification is required, and special construction charges may apply.



Price Includes*	Fiber	EoHFC†
Hub UNI Port	10/100Mb, 1Gb, or 10Gb Ports	Hub must be fiber
Spoke UNI Port	10/100Mb, 1Gb, or 10Gb Ports	10/100Mb Port only
EVC Bandwidth	1Mbps to 10Gbps	2, 4, 6, 8, or 10Mbps

Total price must include one instance of Hub UNI plus Spoke UNI and EVC.  
†Not available for Inter-CRAN opportunities.

\* Special Construction Costs may apply for new fiber builds

**EVPL Section**

**SPOKE SITE - Port and Bandwidth Pricing - EVPL EoHFC - Metro EVC, Basic CoS Only**

EVPL EoHFC - Spoke Site Port and Bandwidth Pricing over coax

	Install	MRC
2Mbps	\$ 500.00	\$ 148.63

EVPL EoHFC - Spoke Site Port and Bandwidth Pricing over coax	4Mbps	\$	500.00	\$	220.38
EVPL EoHFC - Spoke Site Port and Bandwidth Pricing over coax	6Mbps	\$	500.00	\$	261.38
EVPL EoHFC - Spoke Site Port and Bandwidth Pricing over coax	8Mbps	\$	500.00	\$	292.13
EVPL EoHFC - Spoke Site Port and Bandwidth Pricing over coax	10Mbps	\$	500.00	\$	343.38

#### Ethernet Virtual Private Line, Point to Multipoint Basic (EVPL)

EVPL - HUB-SITE Port Pricing	Port Speeds	Install	MRC
EVPL - HUB-SITE Port Pricing	1Gbps	\$ 500.00	\$ 216.28
EVPL - HUB-SITE Port Pricing	10Gbps	\$ 500.00	\$ 690.85
		Install	MRC

#### Ethernet Virtual Private Line (EVPL) Spoke Site Port and Bandwidth pricing - Point to Multipoint Basic

EVPL Spoke Site Port and Bandwidth Pricing - Basic COS	10Mbps	\$	500.00	\$	206.03
EVPL Spoke Site Port and Bandwidth Pricing - Basic COS	50Mbps	\$	500.00	\$	298.28
EVPL Spoke Site Port and Bandwidth Pricing - Basic COS	100Mbps	\$	500.00	\$	415.13
EVPL Spoke Site Port and Bandwidth Pricing - Basic COS	200Mbps	\$	500.00	\$	596.55
EVPL Spoke Site Port and Bandwidth Pricing - Basic COS	500Mbps	\$	500.00	\$	679.58
EVPL Spoke Site Port and Bandwidth Pricing - Basic COS	1Gbps	\$	500.00	\$	817.95
EVPL Spoke Site Port and Bandwidth Pricing - Basic COS	10Gbps	\$	500.00	\$	3,833.50

#### Ethernet Virtual Private Line, Point to Multipoint Priority (EVPL)

EVPL - HUB-SITE Port Pricing	Port Speeds	Install	MRC
EVPL - HUB-SITE Port Pricing	1Gbps	\$ 500.00	\$ 216.28
EVPL - HUB-SITE Port Pricing	10Gbps	\$ 500.00	\$ 690.85

#### Ethernet Virtual Private Line (EVPL) Spoke Site Port and Bandwidth pricing - Point to Multipoint Priority

	Port Speeds	Install	MRC
EVPL Spoke Site Port and Bandwidth Pricing - Priority COS	10Mbps	\$ 500.00	\$ 247.23
EVPL Spoke Site Port and Bandwidth Pricing - Priority COS	50Mbps	\$ 500.00	\$ 357.93
EVPL Spoke Site Port and Bandwidth Pricing - Priority COS	100Mbps	\$ 500.00	\$ 498.15
EVPL Spoke Site Port and Bandwidth Pricing - Priority COS	200Mbps	\$ 500.00	\$ 715.86
EVPL Spoke Site Port and Bandwidth Pricing - Priority COS	500Mbps	\$ 500.00	\$ 815.49
EVPL Spoke Site Port and Bandwidth Pricing - Priority COS	1Gbps	\$ 500.00	\$ 981.54
EVPL Spoke Site Port and Bandwidth Pricing - Priority COS	10Gbps	\$ 500.00	\$ 4,600.20

#### Ethernet Virtual Private Line, Point to Multipoint Premium (EVPL)

EVPL - HUB-SITE Port Pricing	Port Speeds	Install	MRC
EVPL - HUB-SITE Port Pricing	1Gbps	\$ 500.00	\$ 216.28
EVPL - HUB-SITE Port Pricing	10Gbps	\$ 500.00	\$ 690.85

#### Ethernet Virtual Private Line (EVPL) Spoke Site Port and Bandwidth pricing - Point to Multipoint Premium

	Port Speeds	Install	MRC
EVPL Spoke Site Port and Bandwidth Pricing - Priority COS	10Mbps	\$ 500.00	\$ 271.95
EVPL Spoke Site Port and Bandwidth Pricing - Priority COS	50Mbps	\$ 500.00	\$ 393.72
EVPL Spoke Site Port and Bandwidth Pricing - Priority COS	100Mbps	\$ 500.00	\$ 547.97
EVPL Spoke Site Port and Bandwidth Pricing - Priority COS	200Mbps	\$ 500.00	\$ 787.45
EVPL Spoke Site Port and Bandwidth Pricing - Priority COS	500Mbps	\$ 500.00	\$ 897.04
EVPL Spoke Site Port and Bandwidth Pricing - Priority COS	1Gbps	\$ 500.00	\$ 1,079.69
EVPL Spoke Site Port and Bandwidth Pricing - Priority COS	10Gbps	\$ 500.00	\$ 5,060.22

## Comcast Business SD-WAN

**Comcast Business software-defined wide area networking (SD-WAN)** brings together application-aware routing, secure VPN capabilities, and a stateful firewall into an integrated solution that is easy to operate and maintain. When paired with DOCSIS 3.1/Gigabit broadband service, Comcast offers distributed enterprises a way to make broadband smart and unleash the power of the virtualized network. It enables digital businesses to deploy applications faster, manage bandwidth demands efficiently, increase site capacity, and improve performance while providing distributed security, traffic management, and application visibility. Valuable features include application-based routing and local internet breakout, the ability to support load balancing/failover between Comcast connections and customers' existing networks, and the flexibility to support multiple WAN topologies, including any-to-any, hub and spoke, and full mesh. SD-WAN from Comcast Business is available across the U.S. Unlike some legacy telcos and "over-the-top" (OTT) providers, Comcast Business SD-WAN is built within a software-defined networking (SDN) platform that is capable of scaling to meet agile business needs.

See Technical specifications in package

## Comcast Business Active Core SD-WAN Platform

Comcast Business SD-WAN is delivered over ActiveCoreSM — a network-based, carrier-grade platform that enables businesses to virtualize their network functions and manage growing workloads. Providing dynamic scalability and deep service chaining, ActiveCore combines orchestration and virtualization to support better business performance and allow for flexible and scalable provisioning of services across the network. ActiveCore enables enterprises to move away from pre-digital legacy networks to the purpose-built digital SDN world of centralized software controls that quickly, adeptly, and cost-effectively activate and manage resources. It eliminates labor-intensive and time-consuming on-site hardware installations and reconfigurations, reduces the strain of manual processes, and delivers performance and flexibility.

See Technical specifications in package

## SD WAN Service Section

Underlay is priced under Broadband or EDI section

SD WAN Service & Equipment Section	Equipment Install	MRC	Service Setup
SD-WAN Comcast Advantech Medium	up to 1Gbps \$ 550.00	\$ 234.73	\$ 550.00
SD-WAN Comcast Advantech Large	up to 10Gbps \$ 550.00	\$ 306.48	\$ 550.00
SD-WAN Advanced Management	All Speeds \$ 300.00	\$ 51.25	\$ 550.00

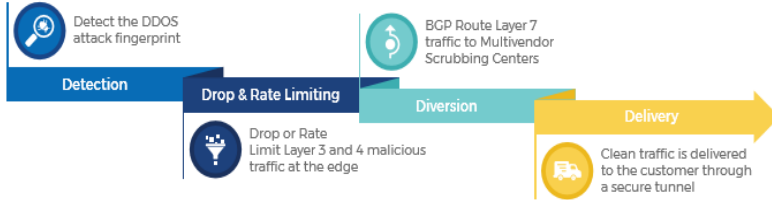
UTM Section SD WAN	Install	MRC
Comcast UTM Service	up to 1 Gbps \$ 550.00	\$ 125.00
Comcast UTM Service	up to 10 Gbps \$ 550.00	\$ 160.00
UTM Advanced Management	All Speeds \$ 550.00	\$ 125.00

SW Router - Small - 1 Mbps - 249 Mbps - Soft Switch Router	Low bandwidth for price sensitive customers
SW Router - Medium - 250 Mbps - 1 Gbps -Soft Switch Router	Preferred growth platform
SW Router - Large - 1 Gbps - 10 Gbps - Soft Switch Router	For Multi-Gig Customers

## DDoS Distributed Denial of Service Mitigation

The Comcast Business DDoS Mitigation Service proactively detects DDoS attack traffic and can alert a Comcast Business Ethernet Dedicated Internet (EDI) customer when an attack occurs. Depending on the subscription ordered by customer and customer preference, Comcast Business initiates mitigation efforts automatically or after requested by the customer. How It Works (Detection, Drop & Rate Limit, Diversion, & Delivery) The Comcast Business DDoS Mitigation Service operates around the clock - 24x7x365 - and mitigation follows a four-stage process based on the 4 Ds of remediation:

### The 4 Ds of Remediation



### DDoS Mitigation Service Options

Comcast Business offers two flexible subscriptions service options for DDoS attach defense as follows: Pricing below.

	Incident-based Subscription	Unlimited Subscription
Detection/Alerting	Proactive network-based detection / automatic alert notifications of DDoS attacks	
Initiating Mitigation	<ul style="list-style-type: none"> <li>Auto detection and alerting</li> <li>Customer calls to commence mitigation (On-demand)</li> <li>Mitigation will cease after 12 hours unless customer contacts Security Operations Support to open another mitigation incident window</li> </ul>	<ul style="list-style-type: none"> <li>Auto detection and alerting</li> <li>Choice of two configuration options:               <ul style="list-style-type: none"> <li>- Automatic (default)</li> <li>- On-demand (Customer calls to confirm commencement of mitigation)</li> </ul> </li> </ul>

### DDoS Unlimited Subscription

	NRC	MRC
DDoS Mitigation Service Unlimited - up to 500 Mbps	\$ 1,000.00	\$ 1,968.00
DDoS Mitigation Service Unlimited - up to 500 Mbps	\$ 1,000.00	\$ 1,968.00
DDoS Mitigation Service Unlimited - up to 500 Mbps	\$ 1,000.00	\$ 1,968.00
DDoS Mitigation Service Unlimited - up to 500 Mbps	\$ 1,000.00	\$ 1,968.00
DDoS Mitigation Service Unlimited - up to 500 Mbps	\$ 1,000.00	\$ 1,968.00
DDoS Mitigation Service Unlimited - up to 500 Mbps	\$ 1,000.00	\$ 1,968.00
DDoS Mitigation Service Unlimited - up to 500 Mbps	\$ 1,000.00	\$ 1,968.00
DDoS Mitigation Service Unlimited - up to 500 Mbps	\$ 1,000.00	\$ 1,968.00
DDoS Mitigation Service Unlimited - up to 500 Mbps	\$ 1,000.00	\$ 1,968.00
DDoS Mitigation Service Unlimited - up to 1000 Mbps	\$ 1,000.00	\$ 2,644.50
DDoS Mitigation Service Unlimited - up to 1000 Mbps	\$ 1,000.00	\$ 2,644.50
DDoS Mitigation Service Unlimited - up to 1000 Mbps	\$ 1,000.00	\$ 2,644.50
DDoS Mitigation Service Unlimited - up to 10,000 Mbps	\$ 1,000.00	\$ 5,104.50
DDoS Mitigation Service Unlimited - up to 10,000 Mbps	\$ 1,000.00	\$ 5,104.50
DDoS Mitigation Service Unlimited - up to 10,000 Mbps	\$ 1,000.00	\$ 5,104.50
DDoS Mitigation Service Unlimited - up to 10,000 Mbps	\$ 1,000.00	\$ 5,104.50
DDoS Mitigation Service Unlimited - up to 10,000 Mbps	\$ 1,000.00	\$ 5,104.50

### DDoS Incident Based Subscription

	NRC	MRC
DDoS Mitigation Service Incident Based (see per incident Fee below)	\$ 1,000.00	\$ 261.38
DDoS Mitigation Service Incident Based (see per incident Fee below)	\$ 1,000.00	\$ 261.38
DDoS Mitigation Service Incident Based (see per incident Fee below)	\$ 1,000.00	\$ 261.38
DDoS Mitigation Service Incident Based (see per incident Fee below)	\$ 1,000.00	\$ 261.38
DDoS Mitigation Service Incident Based (see per incident Fee below)	\$ 1,000.00	\$ 261.38
DDoS Mitigation Service Incident Based (see per incident Fee below)	\$ 1,000.00	\$ 261.38
DDoS Mitigation Service Incident Based (see per incident Fee below)	\$ 1,000.00	\$ 261.38
DDoS Mitigation Service Incident Based (see per incident Fee below)	\$ 1,000.00	\$ 261.38
DDoS Mitigation Service Incident Based (see per incident Fee below)	\$ 1,000.00	\$ 261.38
DDoS Mitigation Service Incident Based (see per incident Fee below)	\$ 1,000.00	\$ 599.63
DDoS Mitigation Service Incident Based (see per incident Fee below)	\$ 1,000.00	\$ 599.63
DDoS Mitigation Service Incident Based (see per incident Fee below)	\$ 1,000.00	\$ 599.63
DDoS Mitigation Service Incident Based (see per incident Fee below)	\$ 1,000.00	\$ 1,845.00
DDoS Mitigation Service Incident Based (see per incident Fee below)	\$ 1,000.00	\$ 1,845.00
DDoS Mitigation Service Incident Based (see per incident Fee below)	\$ 1,000.00	\$ 1,845.00

DDoS Mitigation Service Incident Based (see per incident Fee below) 8 Gbps  
 DDoS Mitigation Service Incident Based (see per incident Fee below) 10 Gbps  
 Plus  
 DDoS Mitigation Incident Fees/PER INCIDENT / 12 Hours up to 500 Mbps <1 Mbps  
 DDoS Mitigation Incident Fees/PER INCIDENT / 12 Hours up to 500 Mbps <5 Mbps  
 DDoS Mitigation Incident Fees/PER INCIDENT / 12 Hours up to 500 Mbps 10 Mbps  
 DDoS Mitigation Incident Fees/PER INCIDENT / 12 Hours up to 500 Mbps 20 Mbps  
 DDoS Mitigation Incident Fees/PER INCIDENT / 12 Hours up to 500 Mbps 40 Mbps  
 DDoS Mitigation Incident Fees/PER INCIDENT / 12 Hours up to 500 Mbps 100 Mbps  
 DDoS Mitigation Incident Fees/PER INCIDENT / 12 Hours up to 500 Mbps 200 Mbps  
 DDoS Mitigation Incident Fees/PER INCIDENT / 12 Hours up to 500 Mbps 400 Mbps  
 DDoS Mitigation Incident Fees/PER INCIDENT / 12 Hours Up to 1000Mbps 600 Mbps  
 DDoS Mitigation Incident Fees/PER INCIDENT / 12 Hours Up to 1000Mbps 800 Mbps  
 DDoS Mitigation Incident Fees/PER INCIDENT / 12 Hours Up to 1000Mbps 1 Gbps  
 DDoS Mitigation Incident Fees/PER INCIDENT / 12 Hours up to 10 Gbps 2 Gbps  
 DDoS Mitigation Incident Fees/PER INCIDENT / 12 Hours up to 10 Gbps 4 Gbps  
 DDoS Mitigation Incident Fees/PER INCIDENT / 12 Hours up to 10 Gbps 6 Gbps  
 DDoS Mitigation Incident Fees/PER INCIDENT / 12 Hours up to 10 Gbps 8 Gbps  
 DDoS Mitigation Incident Fees/PER INCIDENT / 12 Hours up to 10 Gbps 10 Gbps

\$ 1,000.00	\$ 1,845.00
\$ 1,000.00	\$ 1,845.00
<b>NRC</b>	<b>MRC</b>
\$ 1,500.00	
\$ 1,500.00	
\$ 1,500.00	
\$ 1,500.00	
\$ 1,500.00	
\$ 1,500.00	
\$ 1,500.00	
\$ 1,500.00	
\$ 1,900.00	
\$ 1,900.00	
\$ 1,900.00	
\$ 5,000.00	
\$ 5,000.00	
\$ 5,000.00	
\$ 5,000.00	
\$ 5,000.00	

**RFP #GTA 98000-000000-4666 Cost Package Proposal**

**Comcast Business**

**Cost Package**

**Dedicated Internet Access**

**General Pricing Notes**

- \* All pricing is reflected as in Comcast's Footprint, Type 2 costs will be on ICB Basis
- \* Pricing shown does not include federal, state or local regulatory fees, taxes or surcharges.
- \* Additional State Taxes and Surcharges may be applicable, dependent upon your tax exempt status including the Universal Service Fund Surcharge (State), 911 Line Tax (City), Comcast Surcharges Universal Connectivity Charge, Regulatory Recovery Fees, 911 Cost Recovery Fee, P.U.C. Surcharge (State), Telecommunications Relay Service Line Surcharge. Could add up to 30%.
- \* Pricing below may be adjusted at Comcast's sole discretion based on but not limited to service volume, revenue commitments, term length and other commercial considerations.
- \* Pricing does not include costs for construction if needed.
- \* Availability validation is required
- \* Additional Bandwidths available - call comcast for your specific requirement

**Ethernet Dedicated Internet (EDI)**

**Comcast Ethernet Dedicated Internet Service (EDI)**

Comcast Ethernet Dedicated Internet Service is a simple, reliable and flexible alternative to traditional private line dedicated Internet access services, providing high bandwidth and increased efficiencies. Ethernet Dedicated Internet provides an Ethernet Virtual Connection (EVC) from the customer premises location to a Comcast Internet Point of Presence (POP) router. Our Ethernet interface enables compatibility with your LAN. Service availability verification is required, and special construction charges may apply.

\*UNI and Loop Bandwidth must match. UNI Charge incurred at 2Gbps and above + \$205.00



**ETHERNET DEDICATED INTERNET SERVICE**  
Provides dedicated and symmetrical link between existing LAN and public internet.

Pricing Includes	Speeds (Fiber)	Speeds (CoHFC)
UNI Bandwidth*	1Mbps to 10Gbps	2, 4, 6, 8, or 10Mbps
Loop Bandwidth*	1Mbps to 10Gbps	2, 4, 6, 8, or 10Mbps

Static IP's	Install	MRC
1 IP /30	\$ -	\$ 20.00
5 IP's /29	\$ -	\$ 25.00
13 IP's /28	\$ -	\$ 30.00
29 IP's /27	\$ -	\$ 50.00
61 IP's /26	\$ -	\$ 75.00
125 IP's /25	\$ -	\$ 100.00
253 IP's /24	\$ -	\$ 200.00
509 IP's /23	\$ -	ICB Required
1021 IP's /22	\$ -	ICB Required

**EDI EoHFC - Ethernet Dedicated Internet over Coax (EDI EoHFC)**

	Install	MRC
EDI EoHFC - Ethernet Dedicated Internet over Coax 2 Mbps	\$ 500.00	\$ 199.88
EDI EoHFC - Ethernet Dedicated Internet over Coax 4 Mbps	\$ 500.00	\$ 199.88
EDI EoHFC - Ethernet Dedicated Internet over Coax 6 Mbps	\$ 500.00	\$ 199.88
EDI EoHFC - Ethernet Dedicated Internet over Coax 8 Mbps	\$ 500.00	\$ 199.88
EDI EoHFC - Ethernet Dedicated Internet over Coax 10 Mbps	\$ 500.00	\$ 199.88
EDI EoHFC - Ethernet Dedicated Internet over Coax 20 Mbps	\$ 500.00	\$ 358.75

**Ethernet Dedicated Internet (EDI)**

	Install	MRC
EDI - Fiber to Premise 10Mbps	\$ 500.00	\$ 199.88
EDI - Fiber to Premise 50Mbps	\$ 500.00	\$ 574.00
EDI - Fiber to Premise 100Mbps	\$ 500.00	\$ 667.28
EDI - Fiber to Premise 200Mbps	\$ 500.00	\$ 867.15
EDI - Fiber to Premise 500Mbps	\$ 500.00	\$ 1,231.03
EDI - Fiber to Premise 1Gbps	\$ 500.00	\$ 1,535.45
EDI - Fiber to Premise 2Gbps	\$ 500.00	\$ 2,046.93
EDI - Fiber to Premise 3Gbps	\$ 500.00	\$ 2,511.25
EDI - Fiber to Premise 4Gbps	\$ 500.00	\$ 3,075.00
EDI - Fiber to Premise 5Gbps	\$ 500.00	\$ 3,634.65
EDI - Fiber to Premise 6Gbps	\$ 500.00	\$ 3,690.00
EDI - Fiber to Premise 7Gbps	\$ 500.00	\$ 3,895.00
EDI - Fiber to Premise 8Gbps	\$ 500.00	\$ 4,100.00
EDI - Fiber to Premise 9Gbps	\$ 500.00	\$ 4,202.50
EDI - Fiber to Premise 10Gbps	\$ 500.00	\$ 5,227.50

**Router Management Section (for EDI)**

	Install	MRC
Comcast Managed Router Service up to 249 Meg	\$ 550.00	\$ 143.50
Comcast Managed Router Service up to 250 Mbps up to 1G	\$ 550.00	\$ 174.25
Comcast Managed Router Service up to 10G up to 10G	\$ 550.00	\$ 363.88

HW Router - Small - 1 Mbps - 249 Mbps  
HW Router - Medium - 250 Mbps - 1 Gbps  
HW Router - Large - 1 Gbps - 10 Gbps

Low bandwidth for price sensitive customers  
Preferred growth platform  
For Multi-Gig Customers

Broadband Products

General Pricing Notes

- \* All pricing is reflected as in Comcast's Footprint
- \* Pricing shown does not include federal, state or local regulatory fees, taxes or surcharges.
- \* Additional State Taxes and Surcharges may be applicable, dependent upon your tax exempt status including the Universal Service Fund Surcharge (State), 911 Line Tax (City), Comcast Surcharges Universal Connectivity Charge, Regulatory Recovery Fees, 911 Cost Recovery Fee, P.U.C. Surcharge (State), Telecommunications Relay Service Line Surcharge. Could add up to 30%.
- \* Pricing below may be adjusted at Comcast's sole discretion based on but not limited to service volume, revenue commitments, term length and other commercial considerations.
- \* Pricing does not include costs for construction if needed.
- \* Check for pricing to include Port, Access, and Class of Service.
- \* Availability validation is required
- \* Additional Bandwidths available - call comcast for your specific requirement

Comcast Business Internet

When waiting is not an option, Comcast Business delivers reliable speeds that keep up with your demands. Comcast Business Internet plans deliver the essentials that drive business. With Speeds up to 1 Gbps we are 20x faster than DSL. Consistently get the speed you pay for through out the day and during peak hours. Static IP addresses provide a more stable connection with fewer interruptions whether you are connecting remotely or running a server. \* See technical Sheet Included in Package

Comcast Business Internet

Technology	Download Bandwidth	Upload Speed	Standard Installation Fee	Monthly Service Fee (No Term)
Business Class Internet	35 Mbps	5 Mbps	\$ 99.95	\$ 94.95
Business Class Internet	100 Mbps	15 Mbps	\$ 99.95	\$ 159.95
Business Class Internet	200 Mbps	25 Mbps	\$ 99.95	\$ 259.95
Business Class Internet	300 Mbps	30 Mbps	\$ 99.95	\$ 309.95
Business Class Internet	600 Mbps	35 Mbps	\$ 99.95	\$ 359.95
Business Class Internet	1 Gbps	35 Mbps	\$ 99.95	\$ 499.95

Static IP's	Subnet	Install	MRC
1 IP	/30	\$ -	\$ 19.95
5 IP's	/29	\$ -	\$ 24.95
13 IP's	/28	\$ -	\$ 39.95

Modem	Install	MRC
	\$ 99.95	\$ 18.45

Comcast Business WiFi Pro

Business WiFi Pro provides advanced-feature Private WiFi and Guest WiFi networks to Comcast Business customers, deployed using both a Business Wireless Gateway (BWG) and secondary satellite access point (AP) devices. Business WiFi Pro expands the Business WiFi Standard service by providing the Private WiFi and XFINITY® WiFi networks, along with a Guest WiFi network that is open to both Comcast and non-Comcast customers.

Business WiFi Pro provides the ability to control your WiFi preferences through the WiFi Pro Portal that can be accessed on a desktop or mobile device. Seven WiFi Pro features can be accessed from within the portal: network customization, SSID (network) scheduling, bandwidth management, content filtering, landing page, advanced customer analytics and social network integration.

Guest WiFi

Business Guest WiFi is provided to a Comcast Business customer via the secondary satellite access point(s). The BWG device is used as the Internet servicing gateway, but does not serve as the Guest WiFi access point and defers to the secondary access point(s) to provide the Guest WiFi network. The Guest WiFi network is open to both Comcast and non-Comcast customers. The Guest WiFi network broadcasts its open (no password) SSID by default at time of install.

Private WiFi

Business Private WiFi is provided to a Comcast Business customer via the secondary satellite access point(s). The BWG device is used as the Internet servicing gateway, but does not serve as the Private WiFi access point and should have the Private WiFi broadcast turned off or deferring to the secondary access point(s). The Private WiFi network name can be customized by the business' network administrator via the Business WiFi Pro section of the Business Customer Portal. The Private WiFi network uses both the 2.4 GHz and 5 GHz frequencies by default.

Technology	Download Bandwidth	Standard Installation Fee	Monthly Service Fee (No Term)
Comcast Business WiFi Pro			
1 Access Point		\$ 99.95	\$ 14.95
2 Access Points		\$ 99.95	\$ 29.90
Equipment Fee / per access point			\$ 5.00

\* See technical sheet included in package.

Comcast Business Connection Pro is an ancillary service for Business Internet customers who require uninterrupted Internet connectivity.

Comcast Business Connection Pro	Install	MRC
	\$ 99.95	\$ 29.95



Equipment		\$	10.00
-----------	--	----	-------

**Comcast Business SecurityEdge™**

Comcast Business SecurityEdge™ is a scalable, cloud security platform that automatically protects you against a growing number of attacks such as malware, phishing, and botnets. Comcast Business SecurityEdge also enables you to set custom web filters to enforce internet access policy across your internal network. This article provides details on how to configure Comcast Business SecurityEdge service settings on the Comcast Business SecurityEdge portal.

<b>Comcast Business Security Edge</b>		<b>Install</b>	<b>MRC</b>
		\$ 99.95	\$ 29.95

<b>Modem</b>		<b>Install</b>	<b>MRC</b>
		\$ 99.95	\$ 18.45

MANAGED WiFi

General Pricing Notes

- \* All pricing is reflected as in Comcast's Footprint
- \* Pricing shown does not include federal, state or local regulatory fees, taxes or surcharges.
- \* Additional State Taxes and Surcharges may be applicable, dependent upon your tax exempt status including the Universal Service Fund Surcharge (State), 911 Line Tax (City), Comcast Surcharges Universal Connectivity Charge, Regulatory Recovery Fees, 911 Cost Recovery Fee, P.U.C. Surcharge (State), Telecommunications Relay Service Line Surcharge. Could add up to 30%.
- \* Pricing below may be adjusted at Comcast's sole discretion based on but not limited to service volume, revenue commitments, term length and other commercial considerations.
- \* Pricing does not include costs for construction if needed.
- \* Check for pricing to include Port, Access, and Class of Service.
- \* Availability validation is required
- \* Additional Bandwidths available - call comcast for your specific requirement

Comcast Business WiFi Pro

Business WiFi Pro provides advanced-feature Private WiFi and Guest WiFi networks to Comcast Business customers, deployed using both a Business Wireless Gateway (BWG) and secondary satellite access point (AP) devices. Business WiFi Pro expands the Business WiFi Standard service by providing the Private WiFi and XFINITY® WiFi networks, along with a Guest WiFi network that is open to both Comcast and non-Comcast customers.

Business WiFi Pro provides the ability to control your WiFi preferences through the WiFi Pro Portal that can be accessed on a desktop or mobile device. Seven WiFi Pro features can be accessed from within the portal: network customization, SSID (network) scheduling, bandwidth management, content filtering, landing page, advanced customer analytics and social network integration.

Guest WiFi

Business Guest WiFi is provided to a Comcast Business customer via the secondary satellite access point(s). The BWG device is used as the Internet servicing gateway, but does not serve as the Guest WiFi access point and defers to the secondary access point(s) to provide the Guest WiFi network. The Guest WiFi network is open to both Comcast and non-Comcast customers. The Guest WiFi network broadcasts its open (no password) SSID by default at time of install.

Xfinity WiFi - Public Hotspot for patrons and customers. Accessible for free by comcast customers.

Private WiFi

Business Private WiFi is provided to a Comcast Business customer via the secondary satellite access point(s). The BWG device is used as the Internet servicing gateway, but does not serve as the Private WiFi access point and should have the Private WiFi broadcast turned off or deferring to the secondary access point(s). The Private WiFi network name can be customized by the business' network administrator via the Business WiFi Pro section of the Business Customer Portal. The Private WiFi network uses both the 2.4 GHz and 5 GHz frequencies by default.

Technology	Download Bandwidth	Standard Installation Fee	Monthly Service Fee (No Term)
<b>Comcast Business WiFi Pro</b>			
1 Access Point		\$ 99.95	\$ 14.95
2 Access Points		\$ 99.95	\$ 29.90
Equipment Fee / per access point			\$ 5.00

\* See technical sheet included in package.

Comcast Business Connection Pro is an ancillary service for Business Internet customers who

	Install	MRC
<b>Comcast Business Connection Pro</b>	\$ 99.95	\$ 29.95
Equipment	\$ 10.00	

Comcast Business Managed WiFi  
Enterprise with Deep Blue

ICB Pricing for Large Business

Place Holder or DeepBlue

Customized Managed WiFi

ICB

**Business Class Voice**

**General Pricing Notes**

- \* All pricing is reflected as in Comcast's Footprint
- \* Pricing shown does not include federal, state or local regulatory fees, taxes or surcharges.
- \* Additional State Taxes and Surcharges may be applicable, dependent upon your tax exempt status including the Universal Service Fund Surcharge (State), 911 Line Tax (City), Comcast Surcharges Universal Connectivity Charge, Regulatory Recovery Fees, 911 Cost Recovery Fee, P.U.C. Surcharge (State), Telecommunications Relay Service Line Surcharge. Could add up to 30%.
- \* Pricing does not include costs for construction if needed.
- \* Check for pricing to include Port, Access, and Class of Service.
- \* Availability validation is required
- \* Additional Bandwidths available - call comcast for your specific requirement

**Comcast Business Voice and Mobility**

Standard Business Voice Lines over coax. Delivers simplicity, flexibility and lower cost

Traditional POTS - Like Service

Certified for alarm and fire lines

Enables customer owned Analog Devices

Mobile app available with be anywhere

Comcast Business Voice offers the voice features you need to help your business operate more efficiently and effectively. Get important features like Call Forwarding, Extension Dialing and Call Hold along with advanced features such as Priority Alert (distinctive ring) and Selective Call Forwarding. Voicemail is available as an optional feature. You can even listen to your voicemail, review your call history, manage your account and perform even more functions online.

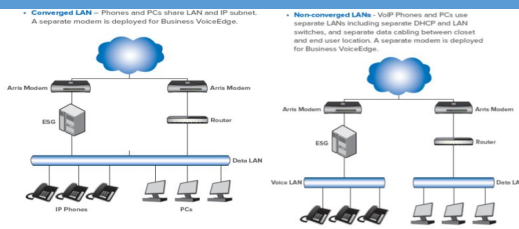
Business Voice Line Type	Description	Applications
Basic Line	Landline phone service that offers	Alarm
	Unlimited local calling	Point-of-sale
	Usage based long distance calling	Fax
Mobility Line	Mobility Line service that offers:	Be Anywhere functionality
	Unlimited local and long distance calling	Small business voice communications
	Over 20 enhanced calling features	
	Simultaneous Ring	
	Sequential Ring	
	Be Anywhere	
	Music on Hold	
	Call Notify	

Comcast Business Class Voice Basic and Mobility	Fees	
Business Voice Installation Fee	\$ 99.95	
Comcast Voice Mobility Monthly	\$ 69.95	Unlimited Local and LD
Comcast Business Basic Voice Monthly	\$ 25.00	Basic Service for Fax and Fire Alarm, Security Lines
Comcast Business Basic Voice Interlata and LD rates	\$ 0.03	
* International rates listed below		

**BVE Section Hosted VoIP**

**Comcast Business VoiceEdge™**

If you are looking to replace your existing phone system without upfront or ongoing maintenance costs, Comcast Business VoiceEdge is a cloud-based voice solution that offers the advanced features that your organization requires while reducing capital expenditures for telephony. With Business VoiceEdge, you'll have a cloud-based, virtual PBX service loaded with calling features that provides affordable and predictable monthly costs, and reliable service and network-based features that enable disaster recovery, efficient mobile integration, interoperability with popular desktop applications like Google Chrome™, Microsoft Office and Skype for Business and seamless connectivity. In addition, Be



Anywhere, a service included with Business VoiceEdge, seamlessly connects staff to send and receive calls on any device wherever they may be. Service availability verification is require, and special construction changes may apply.

**Rules and Guidelines:**

- 5 seat minimum
- No line charges
- A \$3.00/mo Voice Network Investment (VNI) fee will be charged per BVE account

**Comcast Business Voice Edge Service**

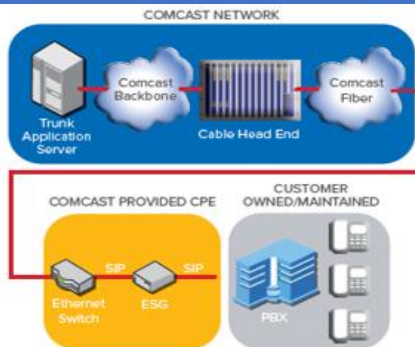
Business VoiceEdge (BVE)

Seats	MRC	NRC
<b>Per UCC Seat</b>	<b>\$ 44.95</b>	<b>\$ 29.95 per UCC</b>
1 through 9	\$ 44.95	\$ 29.95 per UCC
10 through 19	\$ 39.95	\$ 29.95 per UCC
20 plus	\$ 34.95	\$ 29.95 per UCC
<b>BVE Equipment</b>		
EdgeMarc 4550	\$ 9.95	
Polycom VVX 311	\$ 4.95	
Polycom VVX 411	\$ 5.95	
Polycom VVX 501	\$ 6.95	
Polycom VVX 601	\$ 9.95	
Polycom Sidecar	\$ 4.95	
PolyCom 5000 (Conference)	\$ 4.95	
PolyCom 6000 (Conference)	\$ 6.95	
Toll Free Numbers	10.00 each	\$ 9.95
Local TN Numbers	5.00 per block of 20	
	20.00 per block of 100	

All pricing is reflected as in Comcast's Footprint, Type 2 costs will be on ECB Basis  
 Pricing shown does not include federal, state or local regulatory fees, taxes or surcharges.

**Comcast Business SIP Trunking**

**Comcast Business SIP Trunking** offers even greater efficiencies and potential savings leveraging an existing investment in an IP-PBX while reducing costs. Comcast Business SIP Trunking is delivered over the largest VoIP network in the nation, providing dedicated bandwidth to ensure streamlined voice and data traffic. The flexibility of SIP Trunking allows for multiple ways to configure your enterprise – inbound, outbound, 2-way, single or multiple trunk groups – with the opportunity to activate continuity features so you never miss a call. Advanced business continuity and disaster recovery. Flexible Deployment options, Scalable for growth. Service availability verification is require, and special construction changes may apply.



**Rules and Guidelines:**

- \* CCS = Concurrent Call Session
- \* Minimum of 6 CCS required
- \* 200 Pooled Minutes are provided per CCS
- \* Local and Intra-Lata are not charged
- \* A \$3.00/mo Voice Network Investment (VNI) fee will be charged per SIP account

**SIP Trunk Section**

Quantity of CCS	MRC	Install/NRC
6 to 9	\$35.00 per CCS	500
10 to 14	\$30.00 per CCS	500
15 to 24	\$21.00 per CCS	500
25 to 49	\$14.00 per CCS	500
50 to 99	13.00 per CCS	500

100 to 249	\$11.00 per CCS	500
------------	-----------------	-----

Per-Minute Chares (in excess of included minutes)	Included minutes	Install
On-net calls	200 per CCS	
Offnet local	Included	
Offnet intraLATA, intrastate	Included	
Offnet intraLATA, interstate	Included	
Offnet interLATA, intrastate	200 per CCS	
Offnet interLATA, interstate	200 per CCS	

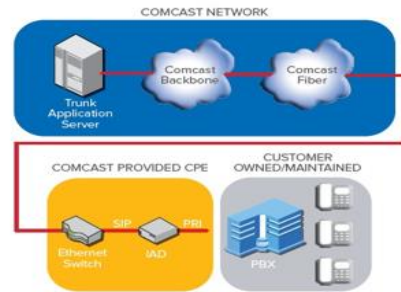
Description	Price
<b>Usage Charges</b>	
Tiered Toll Svcs over the 200 per CCS (pooled)	0.03 per Minute

Non-Recurring Charges	Quantity	List Price
Installation charges per site	1	\$500.00
DID porting charges	Included	Included
Toll Free Installation Charge	1	\$9.95
Non Listed - Commercial	1	\$24.95
Non-Published	1	\$24.95
Expedite Order	1	\$500.00

Description	MRC
<b>Telephone Number (TN) Charges</b>	
1 TN Block (Local)	\$0.45
2 TN Block (Local)	\$0.80
5 TN Block (Local)	\$1.75
10 TN Block (Local)	\$3.00
20 TN Block (Local)	\$5.00
100 TN Block (Local)	\$20.00
200 TN Block (Local)	\$40.00
500 TN Block (Local)	\$100.00
1000 TN Block (Local)	\$200.00

## Comcast Business PRI Trunking

**Comcast Business PRI Trunking** provides a physical connection from your PBX to the largest VoIP network in the nation. PRI Trunking allows you to manage costs by leveraging your existing PBX system and onsite IT staff while maximizing your phone capabilities over our private IP network. This voice service allows you to grow your business and enable business continuity if disaster strikes. Allows caller ID via Calling Name Delivery. Intuitive Management Portal. Service availability verification is require, and special construction changes may apply.



### PRI Section

PRI Service			
SERVICES	MRC		NRC
Full PRI	\$	489.00	\$ 500.00
Additional Services:			
5 DID's	\$	5.00	\$ -
100 DID's	\$	20.00	\$ -
200 DID's	\$	40.00	\$ -

500 DID's	\$ 100.00	\$ -
DNIS	\$ 50.00	\$ -
<b>Usage</b>	Includes 4600 min of LD \$0.03/min afterward	
Toll free number	\$10/month	\$ 9.95

**Rules and Guidelines:**

- \* Two PRI permitted per account for Coax
- \* First block of 20 native telephone numbers included
- \* 200 LD minutes per month included per channel (free domestic calling)
- \* No charge for trunk group configuration
- \* Unlimited local calls included
- \* LD billed in 6 second increments
- \* \$19.95/mo equipment fee charged per site
- \* Maximum of 250 toll-free numbers per account
- \* Pooled minutes also apply to outbound long distance

**International Minutes Pricing (Outbound and Inbound)**

International Location	Dedicated Termination Cost per Minute	Switched Termination Cost per Minute	Notes/Comments
Afghanistan	\$2.90	\$2.90	
Albania	\$1.12	\$1.12	
Algeria	\$0.48	\$0.48	
Andorra	\$0.46	\$0.46	
Angola	\$1.48	\$1.48	
Anguilla	\$0.57	\$0.57	
Antigua Barbuda	\$0.45	\$0.45	
Argentina	\$0.27	\$0.27	
Armenia	\$0.58	\$0.58	
Aruba	\$0.44	\$0.44	
Ascension	\$1.14	\$1.14	
Australia	\$0.09	\$0.30	
Australian Ex Territories	NA	NA	
Australian Ex-Norfolk	NA	NA	
Austria	\$0.08	\$0.30	
Austria-Vienna	NA	NA	
Azerbaijan	\$0.85	\$0.85	
Bahamas	\$0.23	\$0.23	
Bahrain	\$0.64	\$0.64	
Bangladesh	\$0.51	\$0.51	
Barbados	\$0.49	\$0.49	
Belarus	\$0.34	\$0.34	
Belgium	\$0.08	\$0.30	
Belgium-Antwerp	NA	NA	
Belgium-Brussels	NA	NA	
Belize	\$0.64	\$0.64	
Benin	\$0.65	\$0.65	
Bermuda	\$0.17	\$0.17	
Bhutan	\$1.86	\$1.86	
Bolivia	\$0.38	\$0.38	
Bosnia Herzegovina	\$0.34	\$0.34	
Botswana	\$0.84	\$0.84	
Brazil	\$0.14	\$0.25	
Brunei Darussalam	\$0.86	\$0.86	
Bulgaria	\$0.34	\$0.34	
Burkina Faso	\$1.04	\$1.04	
Burundi	\$1.39	\$1.39	
Cambodia	\$2.36	\$2.36	

Cameroon	\$0.48	\$0.48
Canada	\$0.00	\$0.00
Cape Verde	\$0.82	\$0.82
Cayman Islands	\$0.24	\$0.24
Central Africa	\$1.85	\$1.85
Chad	\$2.50	\$2.50
Chile	\$0.24	\$0.30
China	\$0.15	\$0.15
Colombia	\$0.27	\$0.27
Comoros	NA	NA
Congo	\$0.58	\$0.58
Congo Dem Rep	\$0.71	\$0.71
Cook Islands	\$1.66	\$1.66
Costa Rica	\$0.26	\$0.26
Cote d'Ivoire	NA	NA
Croatia	\$0.31	\$0.31
Cuba	\$0.79	\$0.79
Cuba-Guantanamo Bay	NA	NA
Cyprus	\$0.54	\$0.54
Cyprus-Turkish Department	NA	NA
Czech Republic	\$0.25	\$0.25
Denmark	\$0.08	\$0.08
Denmark-Copenhagen	NA	NA
Diego Garcia	\$1.45	\$1.45
Djibouti	NA	NA
Dominica	\$0.49	\$0.49
Dominican Republic	\$0.27	\$0.27
East Timor	\$2.25	\$2.25
Ecuador	\$0.33	\$0.33
Egypt	\$0.37	\$0.37
El Salvador	\$0.28	\$0.28
Equatorial Guinea	\$2.15	\$2.15
Eritrea	NA	NA
Estonia	\$0.67	\$0.67
Ethiopia	\$1.00	\$1.00
Falkland Islands	\$0.45	\$0.45
Faroe Islands	\$0.52	\$0.52
Fiji	\$0.97	\$0.97
Finland	\$0.09	\$0.25
France	\$0.08	\$0.31
France-Lyon Marseille		
Grenoble	NA	NA
France-Paris	\$0.66	\$0.66
French Polynesia	\$1.20	\$1.20
Gabon	\$1.05	\$1.05
Gambia	\$0.58	\$0.58
Georgia	\$0.77	\$0.77
Germany	\$0.08	\$0.25
Ghana	\$0.45	\$0.45
Gibraltar	\$1.04	\$1.04
Greece	\$0.08	\$0.20
Greenland	\$0.59	\$0.59
Grenada	\$0.43	\$0.43
Guadeloupe	\$0.60	\$0.60
Guam	\$1.02	\$1.02
Guatemala	\$0.26	\$0.28

Guiana French	NA	NA
Guinea	NA	NA
Guinea-Bissau	NA	NA
Guyana	NA	NA
Haiti	\$0.47	\$0.47
Honduras	\$0.41	\$0.41
Hong Kong	\$0.10	\$0.10
Hungary	\$0.25	\$0.25
Iceland	\$0.47	\$0.47
India	\$0.28	\$0.30
Indonesia	\$0.32	\$0.32
Iran	\$0.57	\$0.57
Iraq	\$0.45	\$0.45
Ireland	\$0.08	\$0.30
Ireland-Dublin	\$0.08	\$0.30
Israel	\$0.09	\$0.13
Italy	\$0.08	\$0.25
Italy-Milan	\$0.08	\$0.25
Italy-Rome	\$0.08	\$0.25
Italy-Turin	\$0.08	\$0.25
Jamaica	\$0.43	\$0.43
Japan	\$0.09	\$0.23
Jordan	\$0.57	\$0.57
Kazakhstan	\$0.19	\$0.19
Kenya	\$0.65	\$0.65
Kiribati	\$1.17	\$1.17
Korea (North)	\$3.28	\$3.28
Korea (South)	\$0.08	\$0.10
Kuwait	\$0.46	\$0.46
Kyrgyzstan	\$0.30	\$0.30
Laos PDR	\$2.43	\$2.43
Latvia	\$0.34	\$0.34
Lebanon	\$0.54	\$0.54
Lesotho	\$0.84	\$0.84
Liberia	\$0.58	\$0.58
Libya	\$0.97	\$0.97
Liechtenstein	NA	NA
Lithuania	\$0.34	\$0.34
Luxembourg	\$0.08	\$0.26
Macao	\$0.77	\$0.77
Macedonia	\$0.54	\$0.54
Madagascar	\$2.12	\$2.12
Malawi	\$0.48	\$0.48
Malaysia	\$0.17	\$0.17
Maldives	NA	NA
Mali	\$1.06	\$1.06
Malta	\$0.72	\$0.72
Marshall Islands	\$0.74	\$0.74
Martinique	NA	NA
Mauritania	\$1.00	\$1.00
Mauritius	\$1.25	\$1.25
Mayotte	\$2.25	\$2.25
Mexico	\$0.09	\$0.27
Micronesia	\$0.77	\$0.77
Moldova	NA	NA
Monaco	\$0.14	\$0.26



Mongolia	\$1.71	\$1.71
Montenegro	NA	NA
Montserrat	\$0.52	\$0.52
Morocco	\$0.55	\$0.55
Mozambique	\$1.28	\$1.28
Myanmar	\$2.17	\$2.17
Namibia	\$0.80	\$0.80
Nauru	\$3.25	\$3.25
Nepal	\$1.30	\$1.30
Netherlands	\$0.08	\$0.30
Netherlands Antilles	\$0.40	\$0.40
Netherlands-Adam Rdam WestNL	NA	NA
New Caledonia	\$1.45	\$1.45
New Zealand	\$0.08	\$0.08
Nicaragua	\$0.38	\$0.38
Niger	\$0.93	\$0.93
Nigeria	\$0.06	\$0.06
Niue Islands	NA	NA
Northern Mariana	NA	NA
Norway	\$0.08	\$0.24
Oman	\$1.07	\$1.07
Pakistan	\$0.39	\$0.39
Palau	\$1.30	\$1.30
Palestine	\$0.24	\$0.24
Panama	\$0.33	\$0.33
Papua New Guinea	\$1.06	\$1.06
Paraguay	\$0.39	\$0.39
Peru	\$0.33	\$0.38
Philippines	\$0.17	\$0.19
Poland	\$0.15	\$0.35
Portugal	\$0.08	\$0.35
Portugal-Azores	\$0.08	\$0.35
Portugal-Lisbon	\$0.08	\$0.35
Portugal-Madeira	\$0.08	\$0.35
Puerto Rico	NA	NA
Qatar	\$0.95	\$0.95
Reunion	\$1.02	\$1.02
Romania	\$0.31	\$0.31
Russia	\$0.19	\$0.19
Rwanda	\$1.19	\$1.19
Samoa American	NA	NA
Samoa Western	NA	NA
San Marino	\$0.89	\$0.89
Sao Tome and Principe	NA	NA
Saudi Arabia	\$0.47	\$0.47
Senegal	NA	NA
Serbia	\$0.31	\$0.38
Seychelles	\$1.51	\$1.51
Sierra Leone	NA	NA
Singapore	\$0.12	\$0.12
Slovakia	\$0.24	\$0.24
Slovenia	\$0.56	\$0.56
Solomon Islands	\$1.20	\$1.20
Somalia	NA	NA
South Africa	\$0.35	0.35

Spain	\$0.08	\$0.28
Spain-Barcelona	\$0.08	\$0.28
Spain-Madrid	\$0.08	\$0.28
Spain-Valencia	\$0.08	\$0.28
Sri Lanka	\$1.00	\$1.00
St Helena	\$1.44	\$1.44
St Kitts and Nevis	\$0.47	\$0.47
St Lucia	\$0.40	\$0.40
St Pierre and Miquelon	\$0.48	\$0.48
St Vincent Grenadines	\$0.53	\$0.53
Sudan	\$0.88	\$0.88
Suriname	NA	NA
Swaziland	\$0.76	\$0.76
Sweden	\$0.08	\$0.28
Sweden-Stockholm	\$0.08	\$0.28
Switzerland	\$0.08	\$0.33
Switzerland-Geneva	\$0.08	\$0.33
Switzerland-Zurich	\$0.08	\$0.33
Syria	\$0.88	\$0.88
Taiwan	\$0.07	\$0.13
Tajikistan	\$0.22	\$0.22
Tanzania	\$0.48	\$0.48
Thailand	\$0.23	\$0.23
Togo	\$1.11	\$1.11
Tokelau	\$1.63	\$1.63
Tonga	\$1.55	\$1.55
Trinidad and Tobago	\$0.33	\$0.33
Tunisia	\$0.48	\$0.48
Turkmenistan	\$0.27	\$0.27
Turks and Caicos	\$0.52	\$0.52
Tuvalu	NA	NA
Uganda	\$0.05	\$0.05
UK	\$0.08	\$0.30
Ukraine	\$0.25	\$0.25
United Arab Emirates	\$0.37	\$0.37
Uruguay	\$0.39	\$0.39
USA	NA	NA
USA-Alaska	NA	NA
USA-Hawaii	NA	NA
Uzbekistan	\$0.27	\$0.30
Vanuatu	NA	NA
Vatican City	\$0.08	\$0.25
Venezuela	\$0.21	\$0.37
Vietnam	\$0.65	\$0.65
Virgin Islands British	NA	NA
Virgin Islands United States	NA	NA
Wallis and Futuna	\$3.25	\$3.25
Yemen	NA	NA
Zambia	\$0.58	\$0.58
Zimbabwe	NA	NA

\* Switched Termination =  
Mobile Rate per minute

**Unified Communications**

**General Pricing Notes**

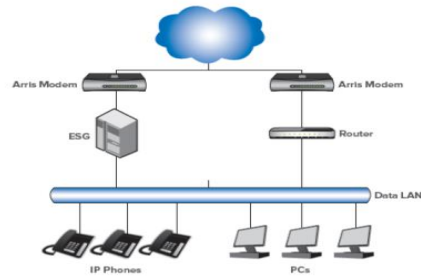
- \* All pricing is reflected as in Comcast's Footprint
- \* Pricing shown does not include federal, state or local regulatory fees, taxes or surcharges.
- \* Additional State Taxes and Surcharges may be applicable, dependent upon your tax exempt status including the Universal Service Fund Surcharge (State), 911 Line Tax (City), Comcast Surcharges Universal Connectivity Charge, Regulatory Recovery Fees, 911 Cost Recovery Fee, P.U.C. Surcharge (State), Telecommunications Relay Service Line Surcharge. Could add up to 30%.
- \* Pricing below may be adjusted at Comcast's sole discretion based on but not limited to service volume, revenue commitments, term length and other commercial considerations.
- \* Pricing does not include costs for construction if needed.
- \* Check for pricing to include Port, Access, and Class of Service.
- \* Availability validation is required
- \* Additional Bandwidths available - call comcast for your specific requirement

**BVE Section Hosted VoIP**

**Comcast Business VoiceEdge™**

If you are looking to replace your existing phone system without upfront or ongoing maintenance costs, Comcast Business VoiceEdge is a cloud-based voice solution that offers the advanced features that your organization requires while reducing capital expenditures for telephony. With Business VoiceEdge, you'll have a cloud-based, virtual PBX service loaded with calling features that provides affordable and predictable monthly costs, and reliable service and network-based features that enable disaster recovery, efficient mobile integration, interoperability with popular desktop applications like Google Chrome™, Microsoft Office and Skype for Business and seamless connectivity. In addition, Be Anywhere, a service included with Business VoiceEdge, seamlessly connects staff to send and receive calls on any device wherever they may be. Service availability verification is require, and special construction changes may apply.

• **Converged LAN** – Phones and PCs share LAN and IP subnet. A separate modem is deployed for Business VoiceEdge.



• **Non-converged LANs** - VoIP Phones and PCs use separate LANs including separate DHCP and LAN switches, and separate data cabling between closet and end user location. A separate modem is deployed for Business VoiceEdge.



**Rules and Guidelines:**

- 5 seat minimum
- No line charges
- A \$3.00/mo Voice Network Investment (VNI) fee will be charged per BVE account

**Comcast Business Voice Edge Service**

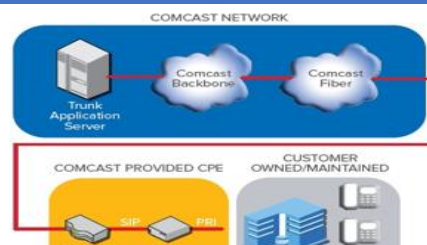
Business VoiceEdge (BVE)

Seats	MRC	NRC
Per UCC Seat	\$ 44.95	\$ 29.95 per UCC
1 through 9	\$ 44.95	\$ 29.95 per UCC
10 through 10	\$ 39.95	\$ 29.95 per UCC
12 plus	\$ 34.95	\$ 29.95 per UCC
<b>BVE Equipment</b>		
EdgeMarc 4550	\$ 9.95	
Polycom VVX 311	\$ 4.95	
Polycom VVX 411	\$ 5.95	
Polycom VVX 501	\$ 6.95	
Polycom VVX 601	\$ 9.95	
Polycom Sidecar	\$ 4.95	
PolyCom 5000 (Conference)	\$ 4.95	
PolyCom 6000 (Conference)	\$ 6.95	
Toll Free Numbers	\$ 10.00 each	\$ 9.95
Local TN Numbers	\$ 5.00 per block of 20	
	\$ 20.00 per block of 100	

All pricing is reflected as in Comcast's Footprint  
Pricing shown does not include federal, state or local regulatory fees, taxes or surcharges.

**Comcast Business PRI Trunking**

Comcast Business PRI Trunking provides a physical connection from your PBX to the largest VoIP network in the nation. PRI Trunking allows you to manage costs by leveraging your existing PBX system and onsite IT staff while maximizing your phone capabilities over our private IP network. This voice service allows you to grow your business and enable business continuity if disaster strikes. Allows caller ID via Calling Name Delivery. Intuitive Management Portal Service availability verification is require, and special construction changes may apply.



**PRI Section**



PRI Service		
SERVICES	MRC	NRC
Full PRI	\$ 489.00	\$ 500.00
Additional Services:		
5 DID's	\$ 5.00	\$ -
100 DID's	\$ 20.00	\$ -
200 DID's	\$ 40.00	\$ -
500 DID's	\$ 100.00	\$ -
DNIS	\$ 50.00	\$ -
<b>Usage</b>	Includes 4600 min of LD \$0.03/min afterward	
Toll free number	\$10/month	\$ 9.95

**Rules and Guidelines:**

- \* Two PRI permitted per account for Coax
- \* First block of 20 native telephone numbers included
- \* 200 LD minutes per month included per channel (free domestic calling)
- \* No charge for trunk group configuration
- \* Unlimited local calls included
- \* LD billed in 6 second increments
- \* \$19.95/mo equipment fee charged per site
- \* Maximum of 250 toll-free numbers per account
- \* Pooled minutes also apply to outbound long distance

TV Video

General Pricing Notes

- \* All pricing is reflected as in Comcast's Footprint
- \* Pricing shown does not include federal, state or local regulatory fees, taxes or surcharges.
- \* Additional State Taxes and Surcharges may be applicable, dependent upon your tax exempt status including the Universal Service Fund Surcharge (State), 911 Line Tax (City), Comcast Surcharges Universal Connectivity Charge, Regulatory Recovery Fees, 911 Cost Recovery Fee, P.U.C. Surcharge (State), Telecommunications Relay Service Line Surcharge. Could add up to 30%.
- \* Pricing blow may be adjusted at Comcast's sole discretion based on but not limited to service volume, revenue commitments, term length and other commercial considerations.
- \* Pricing does not include costs for construction if needed.
- \* Check for pricing to include Port, Access, and Class of Service.
- \* Availability validation is required
- \* Additional Bandwidths available - call comcast for your specific requirement

Comcast Business TV

Comcast Business delivers innovative video solutions to your office that will keep your employees and patrons coming back for more, no matter what they want to watch. News, sports and live entertainment - Comcast Business has it all.

Private Viewing TV

For offices, lobbies, waiting rooms, and break rooms.

Set a welcoming tone for visitors, customers, and let employees keep up with current events. With X1 for Business plans, you can offer live streaming for up to five devices at your location. Search for content using your voice. And manage business TVs on one device.

Public Viewing TV

For restaurants, fitness centers, and retail shops.

Whether your customers come to socialize, exercise, or accessorize, X1 for Business helps keep them energized. Search for programming using the X1 Voice Remote. And easily manage all your business TVs on a single device with the Xfinity TV Remote App.

Broad	Standard Installation Fee	Monthly Service Fee (No Term)	Usage Charge	Usage Charge Type
<b>Television - Private View Standalone</b>				
Cable TV Basic	\$ 99.95	\$ 29.95		
Cable TV Select	\$ 99.95	\$ 39.95		
Cable TV Variety	\$ 99.95	\$ 54.95		
Cable TV Standard	\$ 99.95	\$ 74.95		
Cable TV Preferred	\$ 99.95	\$ 99.95		
Primary Outlet		\$ 9.95		
Additional Outlets		\$ 9.95		
Sports Package		\$ 34.95		
HD Tech Fee		NA		
Additional Cable Card Package		\$ 7.25		
<b>Television - Public View</b>				
Cable TV Basic	\$ 99.95	\$ 29.95		
Cable TV Select	\$ 99.95	\$ 39.95		
Cable TV Variety	\$ 99.95	\$ 54.95		
Cable TV Standard	\$ 99.95	\$ 74.95		
Cable TV Preferred	\$ 99.95	\$ 99.95		
Cable TV Public View Service		\$ 20.00		
Primary Outlet		\$ 9.95		
Additional Outlets		\$ 9.95		
Sports Package		\$ 34.95		
HD Tech Fee		NA		
Additional Cable Card Package		\$ 7.25		

BASIC	SELECT	VARIETY	STANDARD	PREFERRED
<b>10+</b> channels	<b>25+</b> channels	<b>30+</b> channels	<b>75+</b> channels	<b>140+</b> channels
<small>A great mix of major broadcast</small>	<small>Features children's programming and</small>	<small>Offers Select channels plus</small>	<small>Adds popular news, sports, music</small>	<small>Enhances our Standard plan with X1</small>

A great mix of major broadcast channels plus educational, local, shopping, and government channels. Includes:



Features children's programming and news networks along with the Basic channels. Includes:



Offers select channels plus affordable access to top-rated news and entertainment programming. Includes:



Adds popular news, sports, music, and entertainment networks to the Variety plan. Plus, get X1 for Business. Includes:



Enhances our standard plan with X1 for Business and a fully loaded lineup of business, sports, news, and entertainment networks. Includes:

